

THE COMPASSION CATALOG



HELPING YOU MAKE MEANINGFUL CONTRIBUTIONS TO
YOUR COMMUNITY THIS HOLIDAY SEASON.

CONTENTS

**Hallie Strong Foundation
With Love Oregon
P:ear**

**Adelante Mujeres
Griffin's Place**

**Friends of the Children
New Avenues for Youth
Outside In**

**The Pathfinder Network
Adopt One Block
Every Child**

**Meals on Wheels People
The Dougy Center**

**Ruby's Rainbow
Children's Book Bank
Choose Love**

**Harper's Playground
Kenya Keys**

**Portland Audubon
Our Heart to Your Soles
Portland Backpack**

**Sam Day Foundation
Children's Cancer Association
Portland Rescue Mission**

**SOLVE
Animal Aid of Portland**



HALLIE STRONG FOUNDATION

<https://www.halliestrong.org>
[@halliestrongfoundation](#)



MISSION

Launched in 2018 in memory of Hallie, our mission is to outfit the feet of every cancer patient with the fun socks they need (and deserve!) for treatment. Care packages are completely free to send & are for anyone currently undergoing any type of active cancer treatment. Since launching in 2018, we've sent over 1,600 care packages to people fighting cancer in the US and around the world. We've also donated over 3,000 pairs of socks to cancer centers across the US.

THEIR STORY

The day Bethany had her port put in, she wore boring, mismatching socks to the hospital. Her Mom posted a picture of her socks on their blog, along with the update on her surgery and shortly thereafter, Bethany started to receive fun socks in the mail. The socks brightened her day, often when she needed it most. Fast forward to the start of treatment and she quickly realized how necessary warm socks were for treatment days. Anytime she wore a pair she received, she thought of whoever sent them and realized over and over how many people were fighting alongside her.



WAYS TO GET INVOLVED

- [Monetary Donations](#)
- [Sock Donations](#)
- [Sponsor a Care Package](#)
- [Host a Sock Drive](#)

WITH LOVE OREGON

<https://www.withloveoregon.org>
[@withloveoregon](#)



MISSION

With Love is a non-profit organization honored to support foster families by providing safe, clean and quality clothing and supplies for children ages 0-6. Many times, foster parents find out they are receiving a child mere hours before bringing them home. For that reason, they are often unprepared and overwhelmed. We strive to provide families with everything they may need, from clothes to car seats and toys to diapers, so they can focus on loving their little one.

THEIR STORY

In 2016, almost one out of every 100 children were in an Oregon foster care system, nearly double the national average. Adding to that troubling statistic is the reality that being a foster family comes with a lot of expenses. Allie Roth recognized this growing need and founded With Love – a community committed to offering dignity, hope and support to Portland's foster families.



WAYS TO GET INVOLVED

- [Monetary Donations](#)
- [Material Donations](#)
- [Become a With Love Ambassador](#)
- [Volunteer](#)
 - Washing, inspecting, sorting donations

P:EAR

<https://www.pearmentor.org>
[@pearmentor](#)



MISSION

P:ear is a community and place for brilliant and resilient young people, moving through and beyond homelessness. They work closely with the young people they serve and partner with a network of providers to ensure youth get what they need—mental health support, drug and alcohol support, pregnancy and parenting support, shelter, mentorship, housing and more.

THEIR STORY

Founded by three women seeking to create meaningful opportunities for young people experiencing homelessness, p:ear is at its core a community of compassionate people committed to caring for each other in powerful ways. We know that homelessness isn't a character trait. It's an experience. When communities work together, that experience can be temporary. Since opening in 2002, we've enrolled more than 5,250 young people in their programs and grown to serve more than 800 people aged 15-25 each year. We serve an average of 65 kids per day and share 23,160 meals per year.



WAYS TO GET INVOLVED

- [Monetary Donations](#)
- [Donate Supplies](#)
- [Support Pear Gallery](#)
- [Support Pear Coffee Works](#)
- [Support Bike Works by Pear](#)
- [Volunteer Opportunities](#)

ADELANTE MUJERES

<https://www.adelantemujeres.org>
[@adelantemujeres](#)



MISSION

Adelante Mujeres provides holistic education and empowerment opportunities to marginalized Latina women and families to ensure full participation and active leadership in the community. Latina women represent more than 18% of the US population, but they are underrepresented in decision making roles in our society. They have the capacity to lead and we are working to empower the women and girls in our programs to do just that.

THEIR STORY

Adelante Mujeres was created to do something no other nonprofit was doing in the state of Oregon: focus on the needs of marginalized immigrant Latina women. Through their work with the Latino community in other local organizations, Bridget and Barbara noticed that Latina moms did not actively participate in classes or activities, and often remained isolated in their homes. When Adelante Mujeres began to offer programs specifically designed for their needs, these women quickly found their voices.



WAYS TO GET INVOLVED

- [Monetary Donations](#)
- [Volunteer Positions](#)

GRIFFIN'S PLACE

<https://www.griffinsplace.com>

[@griffinsplace](#)

GRIFFIN'S
PLACE

MISSION

Empowering individuals 14 and up with intellectual or developmental disabilities with knowledge and opportunities they need to engage in the community. We believe strong communities encourage everyone to contribute their unique talents and abilities, support the right and promote the abilities of everyone to successfully participate in activities, events and environments, and provide opportunity to join together in service to one another.

THEIR STORY

With her son Griffin's success, and a shift in community inclusion at the forefront, starting in 2014 Becky Berger took on a mission to bring friendship, fun, and growth in her community by starting the non-profit we call Griffin's Place. Through the years Griffin's Place has maintained a drive to create and promote engaging and inclusive events and activities, skills training opportunities, and resources to those who experience disabilities, their providers, and community partners near and far!



WAYS TO GET INVOLVED

- [Monetary Donations](#)
- [Amazon Smile Donations](#)
- [Bottle Drop Collections](#)

FRIENDS OF THE CHILDREN

<https://friendsofthechildren.org>
[@friendspdx](#)

FRIENDS of the
CHILDREN
Portland

MISSION

Impacting generational change by empowering youth who are facing trauma through relationships with professional mentors – 12+ years, no matter what. Any child in any situation can succeed, even those facing the most obstacles. Their youth go on to become leaders in their communities and successful in their careers. This has ripple effects on their siblings, peers, neighbors, and their children, breaking the cycle of generational poverty.

THEIR STORY

For nearly thirty years, Friends of the Children has been empowering youth and families who have been impacted by foster care and the child welfare system. Their youth and family-led, trauma-informed approach supports health and well-being for children and those families along that continuum with these goals in mind: promoting safe and well-supported children and families, providing hope-inspiring services that mitigate trauma and promote well-being, preventing further involvement with the child welfare system



WAYS TO GET INVOLVED

- [Monetary Donations](#)
- [Support the Auction](#)

NEW AVENUES FOR YOUTH

<https://newavenues.org>
[@newaves4youth](#)

NEW
AVENUES
for Youth

MISSION

We are dedicated to the prevention and intervention of youth homelessness. Since 1997, our programs and services have impacted nearly 30,000 young people as they work to overcome barriers, pursue their goals, and realize their potential. From supporting basic needs like meals and counseling to providing opportunities for education, job training, employment, and housing, we meet youth where they are—and help them get where they want to go.

THEIR STORY

Their approach to addressing youth homelessness includes: Drop-In Day Services (meals, showers, laundry, respite from the streets, engagement activities, and legal counsel), education, job training,



WAYS TO GET INVOLVED

- [Monetary Donations](#)
- [Provide Food](#)
- [Collect Art Supplies](#)
- [Donate Hygiene Items](#)
- [Attend a Fundraising Event](#)

OUTSIDE IN

<https://outsidein.org>
[@outsideinpdx](#)



MISSION

Since 1968, Outside In has supported youth experiencing homelessness and other marginalized people as they move toward improved health and self-sufficiency. Driven to meet the changing needs of those it helps, the agency has created an all-inclusive and integrated system of cutting edge and sometimes controversial wraparound services that has transformed and saved thousands of lives over the years.

THEIR STORY

Outside In was founded in June 1968 by Dr. Charles Spray, Arnold Goldberg, and Mary Lu Zurcher as one of the first free community health clinics in the U.S. The organization was founded to serve Portland's "alienated youth," some of whom had substance use problems and most of whom had mental health issues. Today Outside In is a federally-qualified health center and youth department provide a comprehensive array of services to its patients and participants.



WAYS TO GET INVOLVED

- [Monetary Donations](#)
- [Shop Amazon Wish List](#)
- [Shop Target Wish List](#)
- [Volunteer \(must be 21+\)](#)

THE PATHFINDER NETWORK

<https://www.thepathfindernetwork.org>



MISSION

The Pathfinder Network provides justice system-impacted individuals and families the tools and support they need to be safe and thrive in their communities. We believe all people have the capacity to change. We honor the dignity and worth of every individual, engage our clients and employees with compassion, and bring excellence to all we do.

THEIR STORY

Since its founding in 1993, The Pathfinder Network has expanded from its initial work as a contractor with the Oregon Department of Corrections facilitating cognitive programming to an agency offering multifaceted programs in corrections and in the community. In the community, our Center for Family Success in Multnomah County offers parenting classes, reentry mentoring support for justice-involved mothers and fathers, early childhood home visiting, peer mentoring, case management, and mentoring and intervention programs for children of justice-involved parents.



WAYS TO GET INVOLVED

- [Monetary Donations](#)

ADOPT ONE BLOCK

<https://www.adoptoneblock.org>
[@adoptoneblock](#)

ADOPT
ONE
BLOCK

MISSION

Adopt One Block reimagines the way we make our city cleaner and happier. We enable anyone to care for the block they love the most, when and how they want with clean up supplies we deliver to them for free. Together we are a force for good for making our community what it can and should be. Our focus is rapidly implementing highly scalable solutions to make an immediate impact in our community that support our fantastic volunteers.

THEIR STORY

In 2018, Frank began regularly cleaning up two very challenging blocks and reimagined a better way of making our cities cleaner and happier. It took several years to develop the technology solution that would enable a new approach to community engagement he had originally envisioned before launching in 2020. In one year, over 5,000 blocks have been adopted.



WAYS TO GET INVOLVED

- [Adopt Your Block](#)
- [Monetary Donation](#)
- [Buy Adopt One Block Merchandise](#)

EVERY CHILD

<https://everychildoregon.org>

[@everychildoregon](#)



MISSION

Every Child mobilizes community to uplift children & families impacted by foster care in Oregon. Every Child PDX connects caring community members with vulnerable children and families in partnership with the Department of Human Services. We are dedicated to the flourishing of every child through Welcome Boxes. Welcome Boxes provide children entering care with age appropriate activities to occupy them in the uncertain time of waiting at a DHS Child Welfare office for a foster family. Welcome boxes are a tangible act of love.

THEIR STORY

In 2012, Embrace Oregon, (now Every Child PDX), began with one big question from founder Jillana Goble: What happens to children when they are waiting at a DHS Child Welfare office for a Foster Family? The answer was disheartening and sparked Jillana to develop the Welcome Box. The Welcome Box emerged through the financial assistance of a grant and since then over 14,000 have been delivered and programs for other boxes have been developed, including The Launch Box and Flash Box.



WAYS TO GET INVOLVED

- [Monetary Donation](#)
- [Build Welcome Boxes](#)
- [Build Launch Boxes](#)
- [Donate Items to Foster Families in Need](#)
- [Volunteer Opportunities](#)

MEALS ON WHEELS PEOPLE

<https://www.mowp.org>
[@mealswheelsppl](#)



MISSION

We enrich the lives of seniors, and assist them in maintaining independence, by providing nutritious food, human connections and social support. We also use our expertise and capacity to serve other nutritionally at-risk populations. Our vision is that no senior will go hungry or experience social isolation.

THEIR STORY

Meals on Wheels People was founded in 1969 by three caring women, Jean Wade, Martha Shull and Cay Kreiger, who saw a need in the community that was not being met.

They gathered in the basement of the Lincoln Street Methodist Church in February 1970 to serve a hot lunch to about a dozen seniors and then delivered 14 Meals on Wheels on paper plates wrapped in newspaper. Today the Meals on Wheels People produces 8,000 nutritious meals five days each week in a 14,000-square-foot commercial kitchen located in the heart of Multnomah Village.



WAYS TO GET INVOLVED

- [Monetary Donation](#)
- [Become a Meals on Wheels Driver](#)
- [Join the Friendly Chat Program](#)
- [Make Wellness Check Calls](#)

THE DOUGY CENTER

<https://www.dougy.org>
[@thedougycenter](#)



MISSION

The mission of Dougy Center is to provide grief support in a safe place where children, teens, young adults, and their families can share their experiences before and after a death. We provide support and training locally, nationally, and internationally to individuals and organizations seeking to assist children who are grieving. Our resources and support are offered at no cost and are welcoming to all members of our community. They provide a safe place to connect and share before and after a death.

THEIR STORY

Founded in 1982 in Portland, Oregon, Dougy Center started the first peer grief support groups for children, and has become a world-renowned model for bereavement support known as The Dougy Center Model. Dougy Center is named for its inspiration, Dougy Turno, a 13-year old boy who came to Portland, Oregon to receive treatment for an inoperable brain tumor. Every Year, Dougy Center responds to 25,000 crisis, information, referral, and intake calls and provides peer support to more than 2,500 children, teens, young adults, and families who are grieving.



WAYS TO GET INVOLVED

- [Monetary Donation](#)
- [Become a Group Facilitator](#)
- [Material Donations](#)
- [Volunteer](#)

RUBY'S RAINBOW

<https://rubysrainbow.org>
[@rubysrainbow](#)



MISSION

Ruby's Rainbow supports adult students with Down syndrome in achieving their dreams of higher education while spreading awareness of their capabilities and general awesomeness. They provide college scholarships for students with Down syndrome attending post-secondary programs in the U.S., and shout their worth to the rooftops! Ruby's Rainbow envisions a world that celebrates people with Down syndrome and supports the pursuit of higher education, employment, acceptance and inclusion for people of all abilities.

THEIR STORY

The moment she held her second daughter, Ruby, for the first time, Liz Plachta knew she wanted the world to see what she saw in her. Liz didn't know much about Down syndrome, yet she already knew this perfect little human she was holding was going to change the world's perception of those "rockin' it"...just like Ruby. Ruby's Rainbow encourages donations through the 3/21pledge: Donate \$21, pledge to be kind to people of all abilities, and encourage 3 friends to do the same!



WAYS TO GET INVOLVED

- [Monetary Donation](#)
- [Take the 3/21 Pledge](#)
- [Sponsor an Event](#)

CHILDREN'S BOOK BANK

<https://www.childrensbookbank.org>
[@childrensbookbank](#)



MISSION

The Children's Book Bank mission is to advance child literacy, encourage family bonding, and ignite curiosity through the power of books. They envision a community where all children have equal opportunity to succeed as future readers and learners. Families who received books through their Building Home Libraries program reported increasing time spent reading together each week, using reading time to grow closer to their child, and engaging in talk and questions with their child while reading together.

THEIR STORY

Through their flagship Building Home Libraries program, The Children's Book Bank provides children from birth through kindergarten with home libraries containing a collection of age-appropriate books. Our contribution helps children develop pre-reading skills such as recognizing the look and sounds of letters; reading from top to bottom and left to right; and understanding how letters make words, words make sentences, and sentences make stories.



WAYS TO GET INVOLVED

- [Monetary Donations](#)
- [Donate Books](#)
- [Organize a Book Drive](#)
- [Lead a Book Club Reading](#)
- [Volunteer](#)

CHOOSE LOVE

<https://chooselovemovement.org>
[@chooselove](#)

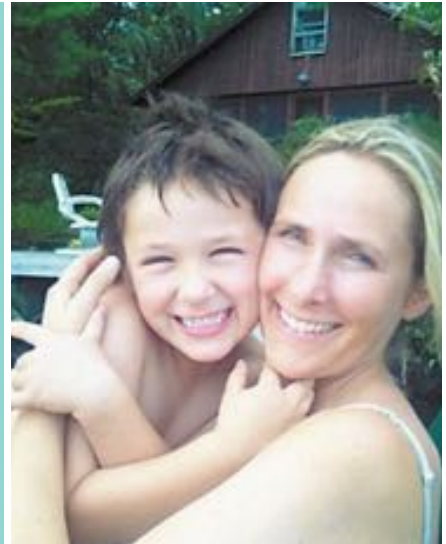


MISSION

Jesse Lewis Choose Love Movement™ is an organization with a mission to create safer and more loving communities through no cost Character Social Emotional Development programs (CSED) that are free of cost and suited for all stages of life. We offer programs tailored for any age from toddlers through adulthood. At the core of it all is a simple formula (COURAGE + GRATITUDE + FORGIVENESS + COMPASSION-IN-ACTION = Choosing Love) that anyone can learn and practice to improve the world around them.

THEIR STORY

Scarlett Lewis founded Choose Love Movement after her son, Jesse, was murdered during the Sandy Hook Elementary School tragedy in December 2012, one of the worst mass shootings in U.S. history. At six years old, Jesse, alongside 19 of his first-grade classmates and six educators, died. Law enforcement says Jesse used his final moments to heroically save nine of his friends. Shortly after his death, Scarlett discovered a message Jesse had written on their kitchen chalkboard. It was written phonetically, as it would have been by a six year old, but it read, "Norturting Helinn Love" (Nurturing, Healing Love).



WAYS TO GET INVOLVED

- [Monetary Donation](#)
- [Become a Choose Love Advocate](#)
- [Shop Choose Love Merchandise](#)

HARPER'S PLAYGROUND

<https://www.harpersplayground.org>
[@harpersplayground](#)



MISSION

Harper's Playground inspires vital communities by creating inviting playgrounds for people of all abilities. They envision a more inclusive world, one playground at a time. Naturally. The Harper's Playground model is simple: Radically Inclusive through several levels of inviting: Physically inviting - accessible and adaptable, socially - natural and communal, and emotionally inviting - thoughtful and beautiful.

THEIR STORY

Most playgrounds aren't designed for everybody—especially kids and families experiencing disability, and that's a problem. Far too often, they leave these vital members of our communities on the sidelines. They're inaccessible to caregivers. They lack nature. They don't spark the imagination; even kids who can access them become quickly bored. Most of all, they don't allow everyone to play together. Inspired by our own life story and circumstances, we're on a mission to change all that.



WAYS TO GET INVOLVED

- [Monetary Donation](#)
- [Build an Inclusive Playground](#)
- [Attend an Event](#)
- [Volunteer](#)

KENYA KEYS

<https://www.kenyakeys.org>
[@mykenyakeys](#)



MISSION

Kenya Keys unlocks the potential of students in impoverished Kenyan communities. We do this by raising awareness and bridging cultures to provide education, mentorship, leadership development, and girl-empowerment opportunities to students. We believe all people have the ability within themselves to solve their greatest challenges. Thank you for supporting our vision of empowering students and changing lives through education!

THEIR STORY

We believe that education is the most important tool we can use against poverty. We know that an education will create generational change for students, their families, and the community. But a high school education in Kenya is not free, and many families cannot afford to pay the tuition. We have sponsored nearly 1,000 high school and college students, built 11 libraries and 5 dorms, and donated more than 13,000 books over the past 15 years. There is more work to do, and you can help.



WAYS TO GET INVOLVED

- [Monetary Donation](#)
- [Sponsor a Student](#)

PORTLAND AUDUBON

<https://audubonportland.org>
[@portlandaudubon](#)



MISSION

Portland Audubon's passionate and growing community has loved and advocated for Oregon's wildlife and wild places for more than 100 years. With the help of our vast network of advocates, nature enthusiasts, and partners, we inspire and connect people to nature through a variety of programs that are grounded in science and learning. Our mission is to inspire all people to love and protect birds, wildlife, and the natural environment upon which life depends.

THEIR STORY

Using a suite of conservation methods, we work to protect imperiled species, reduce threats to birds across the Oregon landscape, preserve high-priority habitat, fight climate change, and advocate for equitable access to nature for all Portland-area residents. Our expert educators provide world-class environmental education programs – both locally and abroad – that inspire more than 12,000 children and 3,000 adults a year to better understand and connect with the natural world.



WAYS TO GET INVOLVED

- [Monetary Donation](#)
- [Become a Member](#)
- [Volunteer](#)
- [Attend an Event](#)
- [Learn Through Education Programs](#)
- [Backyard Habitat Certification Program](#)

OUR HEART TO YOUR SOLES

<https://www.heartstosoles.com>
[@heartstosoles](#)



MISSION

Our Hearts to Your Soles' mission is to provide the less fortunate across the United States with shoes and free foot examinations. We believe that proper foot health is an essential part of everyday life and important to an overall health maintenance program. Our Hearts to Your Soles uses financial donations to help fund the costs of shipping the shoes and socks to each site across the country. With very little overhead, almost 100% of your donation will go directly to the homeless. Less than \$20 can provide someone with a foot examination and a new pair of socks and shoes.

THEIR STORY

After volunteering for the summer at a local hospital and seeing the problems that can be caused by improper footwear, Matt decided to start a non-profit organization that provides free medical foot screening examinations and shoes to the less fortunate people of the metropolitan Pittsburgh area. Because other programs provided clothing but not shoes to the homeless population, he saw a great need for their organization. Our Hearts to Your Soles has provided socks and shoes to more than 40,000 people over the last decade.



WAYS TO GET INVOLVED

- [Monetary Donation](#)
- [Attend an Event](#)

PORTLAND BACKPACK

<https://www.portlandbackpack.com>
[@portlandbackpack](#)



**PORTLAND
BACKPACK**

MISSION

Portland backpack serves children who are at risk of hunger by providing food sacks for weekend days when food scarcity is higher. We believe that engaging the community in our efforts creates a greater impact that reaches beyond reducing hunger. We currently partner with ten Portland schools where a school staff person coordinates our program. They make sure that their students who need food the most are included and distribute the food sacks classroom by classroom to be tucked into each kid's backpack.

THEIR STORY

We make sure the kids we see every day, eat every day. 1 in 5 kids in Oregon experienced food insecurity prior to COVID. We serve 1,000 kids weekly with a meal sack or grocery gift card and have distributed more than 201,000 weekend meals since 2008. It's about more than food! Tucked into many of our food sacks is a loving note written by a community member. Children thrive when they know they are cared for by their community.



WAYS TO GET INVOLVED

- [Monetary Donation](#)
- [Write Community Cares Cards](#)
- [Pack Food Sacks at Home](#)
- [Volunteer](#)

SAM DAY FOUNDATION

<https://samdayfoundation.org>
[@samdayfoundation](#)



MISSION

The Sam Day Foundation funds medical and nutritional research for rare childhood, adolescent and young adult cancers with an emphasis on sarcomas and brain tumors. SDF recognizes the deficit in resources and attention toward these rare cancers and subsequently, the very limited treatment options for young people with these cancers. Today, our hope is to generate enough attention and resources to promising research so that one day, kids with cancer can survive and live well.

THEIR STORY

The Sam Day Foundation started as a group of people who loved Sam Day and were compelled to fight for him and other young people dealing with the brutality of childhood cancer. With his passing in 2016, his circle of support felt a profound sense of loss, anger and sorrow. What started as a proactive effort to save Sam and other young people battling Ewing Sarcoma, has grown into a strong community of compassionate philanthropists and advocates of all ages advocating for young people dealing with those brutal and forgotten cancers.



WAYS TO GET INVOLVED

- [Monetary Donation](#)
- [Participate in an Event](#)
- [Shop SDF Merchandise](#)
- [Volunteer](#)



CHILDREN'S CANCER ASSOCIATION

<https://joyrx.org>
[@ccajoyrx](#)



MISSION

At Children's Cancer Association (CCA), we know it takes more than medicine to treat cancer and serious illness. When a child is facing life's most challenging moments, they also need emotional healing. For 25 years, we've been doing just that—delivering programs to help young patients find their Joy—one song, one friendship, one breath of ocean air at a time. Because when a child experiences Joy, their emotional well-being is positively impacted. Simply put: Joy makes sick kids feel better.

THEIR STORY

Regina Ellis and her family founded CCA in 1995 after her five-year-old daughter Alexandra died of cancer. Along with other parents, pioneers, and dreamers she set out to create something extraordinary: an organization with a new vision for what pediatric cancer support services might look like. What started around Regina's kitchen table has grown to one of the largest children's health non-profits in the Northwest with annual revenue of over \$6 million, and award-winning programs that reach children across the nation. Regina proudly serves as CCA's Founder and Chief Joy Officer.



WAYS TO GET INVOLVED

- [Monetary Donation](#)
- [Gift Card Donation](#)
- [Attend an Event](#)
- [Volunteer](#)

PORTLAND RESCUE MISSION

<https://portlandrescuemission.org>
[@pdxmission](#)



**Portland
Rescue Mission**

MISSION

Since 1949, Portland Rescue Mission has been tirelessly committed to breaking the cycle of homelessness, addiction, and despair in the lives of hurting people in need. This is done by a group of highly relational, joyful servants comprised of 100 staff and 1,750 volunteers who shine a light by providing solutions to urgent needs, addiction recovery, vocational training, and transitional support.

THEIR STORY

It was 1949 when John Van Diest, Sr. looked with compassion at the hungry, destitute men struggling on the streets of Portland and shared his lunch. It happened so often that his wife, Tress, began making extra sandwiches for him to pass out to broken men. From those humble beginnings, Portland Rescue Mission was born. Today Portland Rescue Mission serves men, women, and children in seven locations: Burnside Shelter, The Harbor, Shepherd's Door, three community homes, and our Drive Away Hunger location. Our ministry includes a wide range of programs designed to meet a hurting person at their point of need and walk beside them toward their journey home.



WAYS TO GET INVOLVED

- [Monetary Donation](#)
- [Donate Clothing and Goods](#)
- [Pack Care Kits](#)
- [Volunteer](#)

SOLVE

<https://www.solveoregon.org>
[@solveinoregon](#)



MISSION

SOLVE restores and preserves Oregon's environment by mobilizing the power of volunteers and partners with the generosity of donors. Across the state, we bring diverse communities together to improve the health and safety of our neighborhoods and natural areas including our coast, rivers, parks, and forests. We implement litter cleanups because we know the importance of keeping our neighborhoods safe and healthy, while also understanding the importance of picking up litter before it heads downstream, impacting our shared ocean.

THEIR STORY

Judie Hansen and Eleanor Dye decided to do something to rid the state's beaches of litter. So in 1984 Oregon led the world with the first statewide volunteer coastal cleanup ever. These coastal cleanups are now spring and fall traditions for thousands of Oregonians. On average 7000 volunteers pick up over 50 tons of litter and marine debris from the Oregon Coast Each Year. Common items found on Oregon's coast such as six-pack can carriers, fishing line, and netting which entangle and kill hundreds of seabirds, fish, and mammals each year. Litter fouls boat propellers, clogs engines and contributes to the degradation of our beaches. It also puts a damper on coastal tourism and the local economy.



WAYS TO GET INVOLVED

- [Monetary Donation](#)
- [Attend a Cleanup Event](#)
- [Shop Solve Merchandise](#)

ANIMAL AID OF PORTLAND

<https://www.animalaidpdx.org>
[@animalaidpdx](#)



MISSION

Animal Aid of Portland enhances the welfare of companion animals through individualized care and lifelong commitment, rescue and adoption, resources and education, and community partnerships. Our vision is to be a recognized leader within a united local animal welfare community by working as a team of invested staff and volunteers to empower compassionate stewardship for thriving companion animals. We value sustainability and accountability, compassion and respect, diversity and inclusion, leadership and teamwork, and supporter relationships and community engagement.

THEIR STORY

Animal Aid was founded in 1969 by Jack and Kathryn Hurd. A radio talk show host and animal welfare advocate, Jack spoke on air about the number of animals abandoned in Laurelhurst Park near his home. The Hurds' direct work in animal rescue began with "Chicken Charley," a half-dead kitten they found and nursed back to health. Later, the Hurds rescued 12 more cats from their neighborhood. Animal Aid officially became a nonprofit organization in 1973. Its original mission was to provide food for domestic and wild animals, to provide funds for routine and emergency veterinarian care, to rehabilitate and return wildlife to its natural habitat, and to promote the humane treatment of all domestic and wild creatures.



WAYS TO GET INVOLVED

- [Monetary Donation](#)
- [Adopt a Pet](#)
- [Foster a Pet](#)
- [Become a Member](#)
- [Materials Donation](#)
- [Shop Animal Aid Merchandise](#)
- [Volunteer](#)

OTHER GREAT ORGANIZATIONS

There are so many great non-profits doing amazing work. Here are some of our family's favorites:

[Alzheimer's Association](#)

[American Lung Association](#)

[Charity: Water](#)

[Dolly Parton's Imagination Library](#)

[Donors Choose](#)

[Feeding America](#)

[Kiva Loans](#)

[The Trevor Project](#)

[Vitalogy Foundation](#)

[Wounded Warrior Project](#)

 EVERY NON-PROFIT IN THIS CATALOG WAS
RECOMMENDED BY A FRIEND. THANK YOU! 

The Compassion Catalog was compiled by
Beth Pacyk of RedWineAndGlueSticks.com
